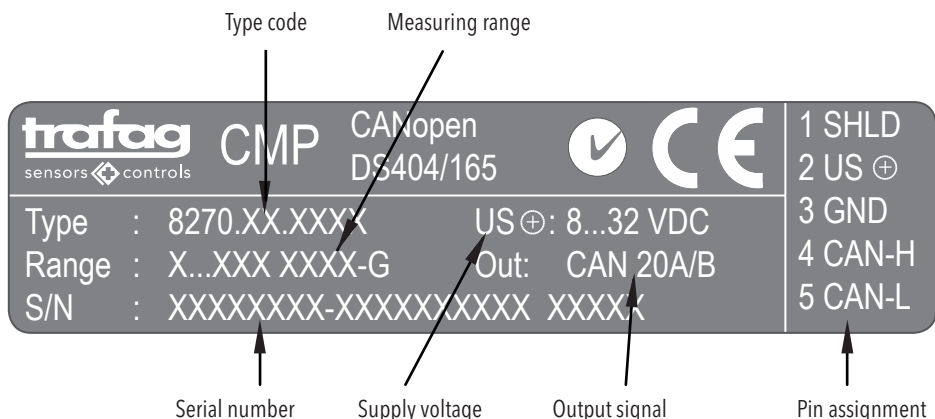



Technical specification

Mounting torque:	max. 25 Nm
Ambient temperature:	-40°C ... +125°C
Media temperature:	-50°C ... +135°C

Type label description



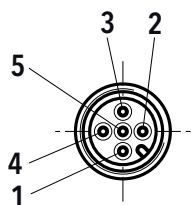
The diagram shows a grey rectangular label with the following text and markings:

- trafag** sensors  controls
- CMP** CANopen DS404/165
- CE mark and a checkmark icon
- 1 SHLD
- 2 US \oplus
- 3 GND
- 4 CAN-H
- 5 CAN-L

Labels and arrows point to the following fields:

- Type code:** 8270.XX.XXXX
- Measuring range:** XXXX-G
- Serial number:** XXXXXXXX-XXXXXXXXXX
- Supply voltage:** US \oplus : 8...32 VDC
- Output signal:** Out: CAN 20A/B
- Pin assignment:** 1 SHLD, 2 US \oplus , 3 GND, 4 CAN-H, 5 CAN-L

Electrical connections

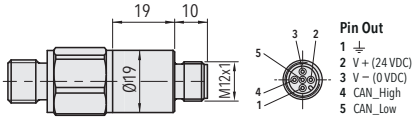


Pin	Out
1	\perp
2	Us+ (24VDC)
3	Us- (0 VDC)
4	CAN_High
5	CAN_Low

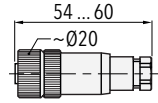
CANopen-protocol

Output signal:	CAN BUS (ISO 118982)
CANopen:	DS-301 V4.0
Device profile:	DS-404 V1.2
Baudrate:	10kbit/s...1Mbit/s, Auto
Error control:	Nodeguarding, Heartbeat
Node ID:	LSS (DSP 305 V2.0) full implemented, proprietary
No. of PDO's:	4 Tx
PDO modes:	event-/time-triggered remotely requested sync (cyclic), sync (acyclic)
PDO linking:	yes
PDO mapping:	yes
No. of SDO's:	1 server
Emergency message:	yes
CiA certified:	yes

Electrical connections



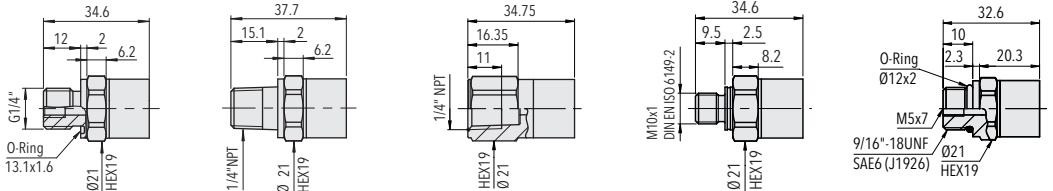
8270.X.XXXX.35.XX.XX



8270.XX.XXXX.XX.XX.33

Pressure connections

Relative pressure ≤ 0 ... 2.5 bar



8270.XX.2X17.XX.XX.XX

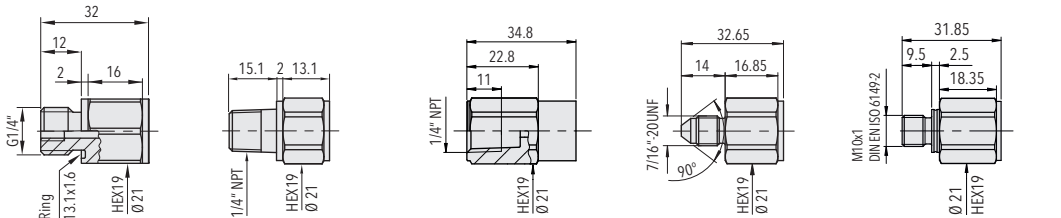
8270.XX.2X30.XX.XX.XX

8270.XX.2X13.XX.XX.XX

8270.XX.2X32.XX.XX.XX

8270.XX.2X61.XX.XX.XX

Relative pressure > 0 ... 2.5 bar



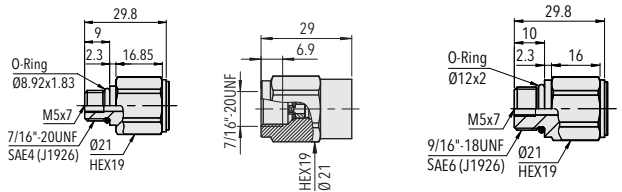
8270.XX.2X17.XX.XX.XX

8270.XX.2X30.XX.XX.XX

8270.XX.2X13.XX.XX.XX

8270.XX.2X18.XX.XX.XX

8270.XX.2X32.XX.XX.XX

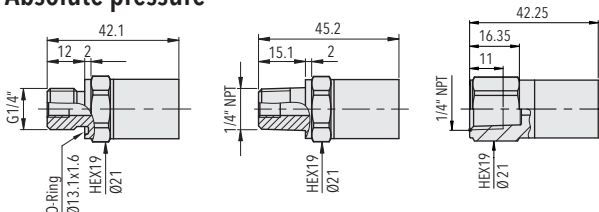


8270.XX.2X42.XX.XX.XX

8270.XX.2X24.XX.XX.XX

8270.XX.2X61.XX.XX.XX

Absolute pressure



8270.XX.4X17.XX.XX.XX

8270.XX.4X30.XX.XX.XX

8270.XX.4X13.XX.XX.XX