

Sanitary and Water Technology



Cost effective, convenient and reliable water management is the great challenge of the 21st Century. For you and your customers, we are applying our Know-How in the development and production of solutions according to these demands.

APPLICATIONS

SANITARY & WATER TECHNOLOGY

Pilot valve

2-way solenoid valve, latching function

Orifice (DN): 0.6 mm

Pressure: 0,5...10 bar

Medium: Drinking water

Valve body: Plastic



Water supply

Type PI 209-002

**2-way solenoid valve,
direct actuated, latching valve**

Orifice (DN): 0.6 mm

Pressure: 1...10 bar

Medium: Water

Valve body: Plastic



Water tap

Type PI 200-005

**2-way valves, direct actuated,
latching function**

Orifice (DN): 0.8 mm

Pressure: 1...8 bar

Medium: Water

Valve body: POM



Water supply

Type PA 209-001

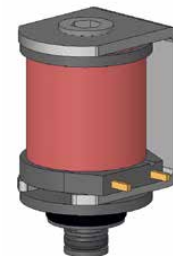
**2-way solenoid valve,
direct actuated, NC**

Orifice (DN): 0.6 mm

Pressure: 1...10 bar

Medium: Water

Valve body: Plastic



APPLICATIONS

SANITARY & WATER TECHNOLOGY

APPLICATIONS

SANITARY & WATER TECHNOLOGY

Water treatment

Type PN 200-001

2-way solenoid valve, servo actuated, NC, electronic controlled, battery supply

Orifice (DN): 10 mm

Pressure: 1...16 bar

Medium: Water

Valve body: Plastic



Water treatment

Type PH 208-001

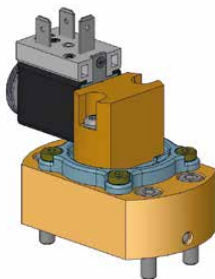
2-way solenoid valve, servo actuated, NC

Orifice (DN): 6.5 mm

Pressure: 0.5...10 bar

Medium: Water

Valve body: Brass



Water treatment

Type MI 240-006

2-way latching valve, with electronic timer and battery supply

Orifice (DN): 8 mm

Pressure: 1...8 bar

Medium: Water

Valve body: Brass



Water treatment

Type PH 208-001

2-way valve, manually actuated, NC

Orifice (DN): 10 mm

Pressure: 1...16 bar

Medium: Water

Valve body: Plastic



APPLICATIONS

SANITARY & WATER TECHNOLOGY