



Regardless of whether these are deployed in standard solutions or in customer specific applications – our products jointly developed with you guarantee precision, reliability and optimized energy consumption. Offer your customers more productivity with Staiger-Solutions.

Small engines

Type VA 204-708

**2-way Spider®-Valve, size 7 mm,
axial flow, direct actuated, NC**

Orifice (DN): 0.7 mm

Pressure: 1...3 bar

Medium: Gasoline

Valve body: Stainless steel



Small engines

Type PA 104-001

**2-way Spider®-Valve, size 7 mm,
direct actuated, NO**

Orifice (DN): 0.6 – 1.0 mm

Pressure: 0...700 mbar

Medium: Gasoline

Valve body: Plastic



7 mm

Small engines

Type PA 249-001 P

2-way tube-seat valve, NC

Orifice (DN): 3.0 – 4.0 mm

Pressure: 0...8 bar

Medium: Water

Valve body: Plastic



9 mm

Small engines

Type VA 204-901 V

**2-way Spider®-Valve,
direct actuated, NC**

Orifice (DN): 0.6 – 1.0 mm

Pressure: 0...0.2 bar

Medium: Gasoline

Valve body: Stainless steel



9 mm

Pneumatic servo actuated valve

Type VA 304-903

**3-way Spider®-Valve, size 8 mm,
direct actuated, NC**

Orifice (DN): 0.5 – 1 mm

Pressure: 2...8 bar

Power consumption: 0.55 W

Medium: Compressed air

Valve body: Stainless steel



Tire pressure regulation

Typ MG 304-901

**3-way Spider®-Valve, size 8 mm,
direct actuated, NC**

Orifice (DN): 2.5 mm

Pressure: 1...8 bar

Power consumption: 2.0 W Peak; 0.5 W Hold

Medium: Compressed air

Valve body: Stainless steel; Valve housing: Aluminium



Automation

Type MA 304-707

**3-way Spider®-Valve, size 7 mm,
direct actuated, NC**

Orifice (DN): 0.6 mm

Pressure: 0...6 bar

Medium: Compressed air, gases

Valve body: Stainless steel



Automation

Type MA 733-003

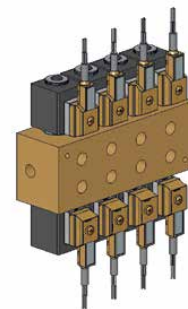
**8-fold manifold valve block with
2-way solenoid valves, direct actuated,
NC, with cable plugs**

Orifice (DN): 4 mm

Pressure: 0...5.5 bar

Medium: Compressed air

Valve body: Brass



Automation

Type MA 104-705

**2-way Spider®-Valve, size 7 mm,
axial flow, direct actuated, NO**

Orifice (DN): 1.1 mm

Pressure: 0...400 mbar

Medium: Gases

Valve body: Brass



Vacuumgripper

Type MA 444-100

**2-way Spider®-Valve, size 21 mm,
direct actuated, NO**

Orifice (DN): 4 mm

Pressure: -1...0 bar

Medium: Compressed air

Valve body: Aluminium



Automation

Type VA 304-507

**3-way Spider®-Valve, size 15 mm,
direct actuated, NC**

Orifice (DN): 1.5 mm

Pressure: 7 bar

Medium: Compressed air

Valve body: Stainless steel



Packing machines

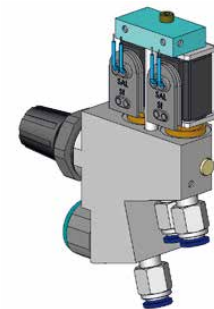
**2-fold manifold with 3-way solenoid valves
direct actuated, NC, with pressure control**

Orifice (DN): 2.0 mm

Pressure: 1...5 bar

Medium: Compressed air

Valve body: Aluminium



Packing machines

Type MA 753-001

**2-fold manifold with 2-way and
3-way solenoid valves, direct actuated**

Orifice (DN): 6 and 2.2 mm

Pressure: 0...1 bar absolut

Medium: Compressed air

Valve body: Aluminium/Brass



Fire extinguishing system

Type MA 203-002

**2-way solenoid valve,
direct actuated, NC**

Orifice (DN): 1.6 mm

Pressure: 0...40 bar

Medium: Extinguishing agent

Valve body: Brass



Fire extinguishing system

Type MA 203-019

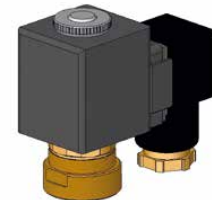
**2-way solenoid valve, direct actuated,
NC, with connector**

Orifice (DN): 0.8 mm

Pressure: up to 170 bar

Medium: Extinguishing agent

Valve body: Brass



Automatic car wash system

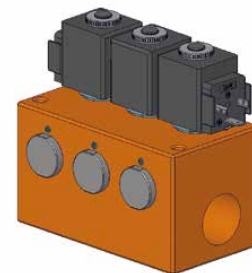
**3-station 2-way manifold valve block,
servo actuated, NC**

Orifice (DN): 10 mm

Pressure: 3...80 bar

Medium: Water

Valve body: Brass



Automatic car wash system

Type PA 702-004

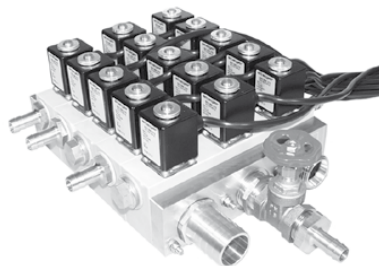
**15-fold manifold with 2-way valves,
direct actuated, NC**

Orifice (DN): 11 mm

Pressure: 0...0.5 bar

Medium: DI-water, domestic warm/cold water,

Valve body: PP



Massflow Controller

Type VP 209-001

**2-way proportional valve,
direct actuated, NC**

Orifice (DN): 4.5 mm

Pressure: 0...3 bar

Medium: Neutral and aggressive gases

Valve body: Stainless steel (1.4301)



Vacuum technology

Type VA 101-001

**2-way solenoid valve,
direct actuated, NO**

Orifice (DN): 2.2 mm

Pressure: Vacuum

Medium: Compressed air

Valve body: Stainless steel



Compressor condensate drain

Type MA 222-040

**2-way solenoid valve, direct actuated, NC,
with electronic timer**

Orifice (DN): 1.5 mm

Pressure: 1...10 mbar

Medium: Compressed air

Valve body: Brass

Cycle time: t_{on} 5 sec./ t_{off} 45 min.

