

# Displays

## Panel mounting, series VA3K01

- Programmable electronic flow display for switch panel mounting
- Suitable for all Sika flow sensors equipped with a frequency/pulse output\*
- Display can be programmed for flow or volume
- 14-segment LED for improved text display
- Automatic help texts
- Two relay outputs with potential-free change-over contacts
- Voltage supply for the sensor (type-dependent)
- User lock by means of lock input, e.g. for key switch
- Gate input for activating/deactivating

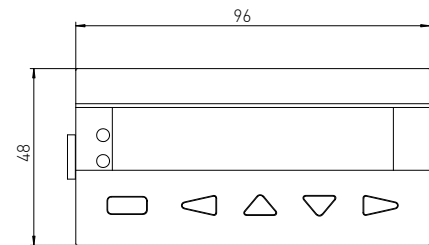
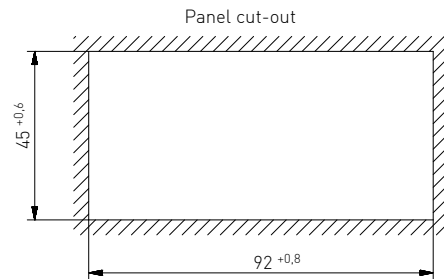
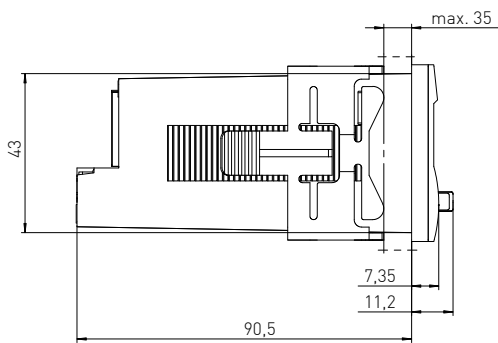


\* Signal amplitude at least 7 V

Technical data	
<b>Display</b>	6-digit, 14-segment LED display, red, 14 mm character height
<b>Programming</b>	Using front keys or by teach-in function
<b>Signal input</b>	Frequency signal from flow or volume sensor
<b>Outputs</b>	2 x relays with change-over contact
→ <b>Switching voltage</b>	Max. 250 VAC/150 VDC
→ <b>Switching current</b>	Max. 3 A AC/DC, min. 30 mA DC
→ <b>Switching capacity</b>	Max. 750 VA/90 W
<b>Operating temperature</b>	-20 °C...65 °C
<b>Storage temperature</b>	-25 °C...75 °C
<b>Housing material</b>	Polycarbonate UL94 V-2
<b>Protection class EN 60529</b>	IP65 (front side)
<b>Protection class EN 60730-1</b>	Class II
<b>Voltage supply (sensor)</b>	(AC version): 24 V DC (±15 %), 80 mA (DC version): Max. 80 mA, connected voltage supply is looped through
<b>Power supply</b>	100...240 V AC (±10 %), max. 11 VA, 50/60 HZ or 10...30 V DC, max. 5.5 W

### Options

- Output interface RS 232, RS 485 for printer or large-screen display
- AC or DC voltage supply



Order code	Example → VA3K01S101SR2	0	D0
<b>Type</b>			
VA3K01	VA3K01S101SR2		
<b>Output-interface</b>			
None		0	
RS 232		2	
RS 485		4	
<b>Power supply</b>			
10...30 VDC			D0
90...260 VAC			A0